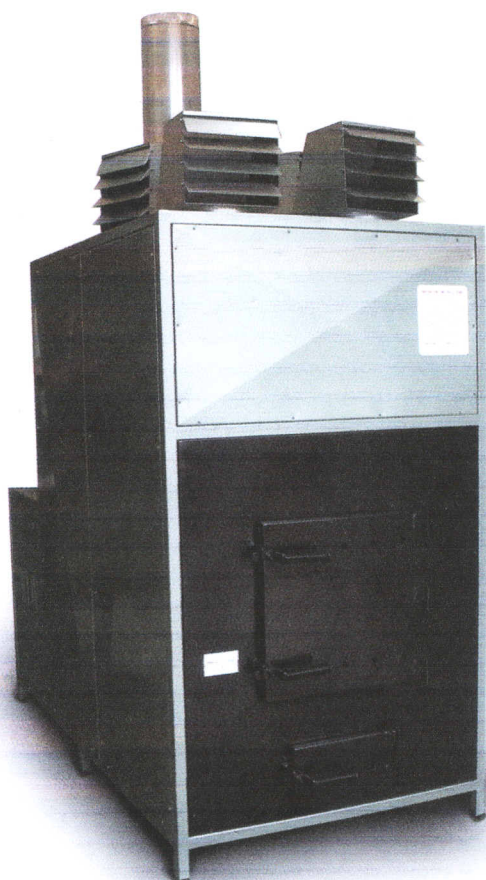


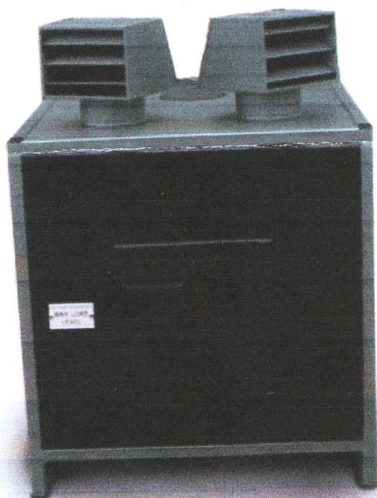
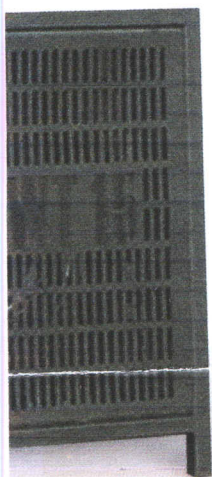
**W.S. WOODMACHINERY**  
UNIT 9, 36 HORNOCK ROAD  
GARTSHERRIE INDUSTRIAL ESTATE  
COATBRIDGE  
ML5 2QA  
TEL. 01236-432700  
FAX. 01236-432909

...y and reduce your heating & skip bills

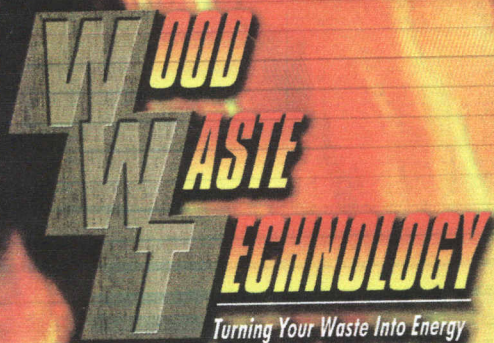


- Major breakthrough in technology.
- Simple to operate.
- Clean air act exempt appliance.
- Each unit is of heavy duty construction and has a full refractory lined fire box for added protection.
- Double pass heat exchange maximising heat output.
- A large firebox enables maximum waste disposal.
- To ensure clean burning a combustion fan is fitted to each unit.
- Constructed with a insulated cabinet for added safety.
- Thermostatically controlled.
- The most reliable heavy duty wood waste heater available in the world.
- Extensive research and development ensures the unit has been designed to operate in a clean air zone without the need for a costly afterburner - saving even more money\*
- 24 hour despatch on spares - dedicated spares and service department.
- We have a large network of agents covering all the UK and Ireland - for fast response.
- Summer heat dumps available ensuring all year round waste disposal.
- Fully wired and ready to use, virtually maintenance free.
- 12 month payback! Easy to manage finance available.

*\*conditions may apply.*







**W.S. WOODMACHINERY**  
UNIT 9, 36 HORNOCK ROAD  
GARTSHERRIE INDUSTRIAL ESTATE  
COATBRIDGE  
ML5 2QA  
TEL. 01236-432700  
FAX. 01236-432909

*...turn your waste into ene*

***Are your waste removal bills rising all the time? Are your heating bills doing the same?*** So why pay to have your waste wood removed when you can burn it cleanly and efficiently all year round and have your heating for FREE when required.

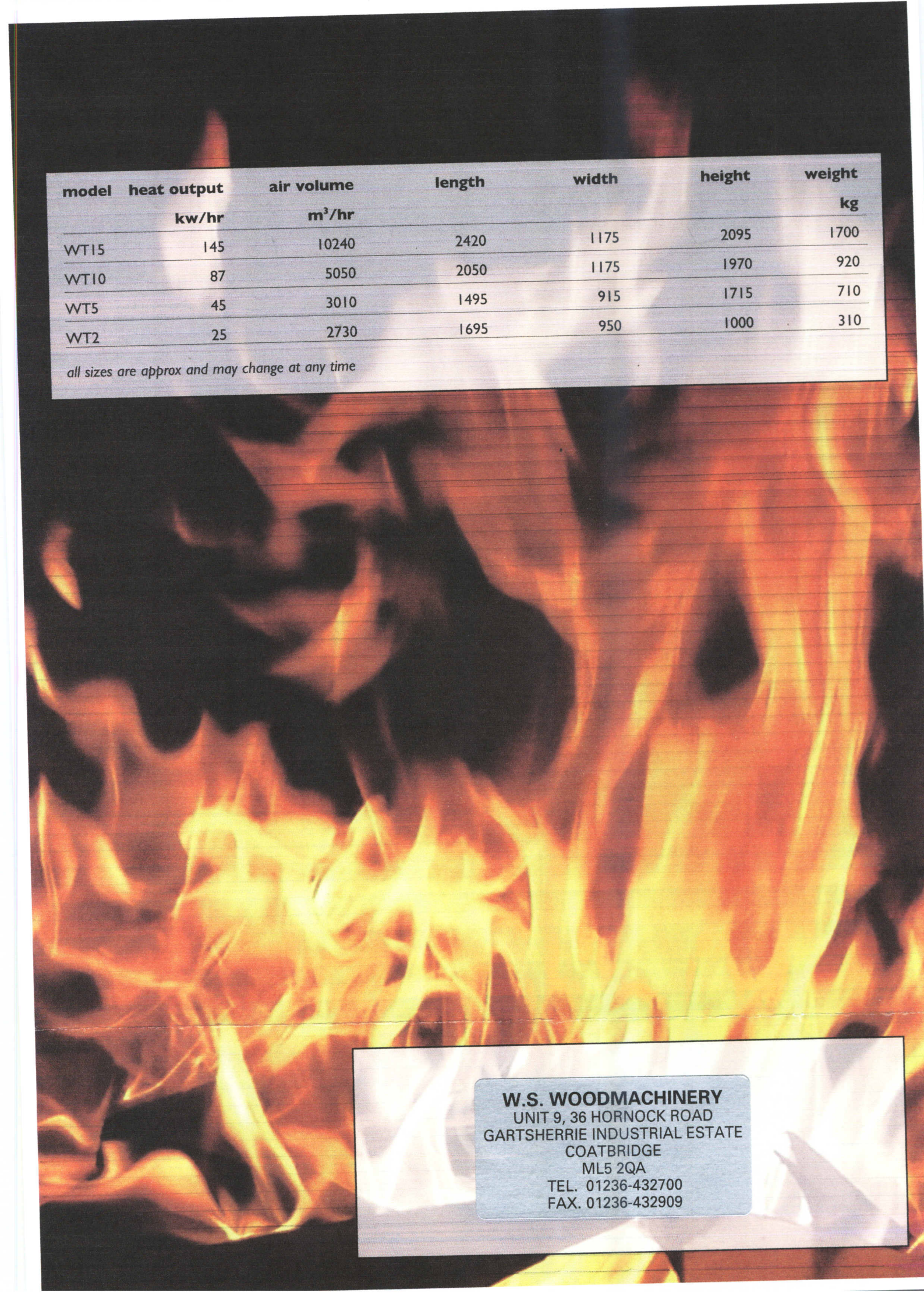
WOOD WASTE TECHNOLOGY have perfected the design over many years of research and are confident that we have the most durable, heavy duty heater available in the marketplace today.

More and more companies are investing in wood waste heaters and the only complaint we hear is "Why didn't we buy one years ago?". The average factory recoups it's initial investment in around 12 months, and will save thousands of pounds over the following years.

The WT range of warm air heaters are designed to burn all types of wood off cuts and joinery waste.







model	heat output kw/hr	air volume m <sup>3</sup> /hr	length	width	height	weight kg
WT15	145	10240	2420	1175	2095	1700
WT10	87	5050	2050	1175	1970	920
WT5	45	3010	1495	915	1715	710
WT2	25	2730	1695	950	1000	310

*all sizes are approx and may change at any time*

**W.S. WOODMACHINERY**  
UNIT 9, 36 HORNOCK ROAD  
GARTSHERRIE INDUSTRIAL ESTATE  
COATBRIDGE  
ML5 2QA  
TEL. 01236-432700  
FAX. 01236-432909